



ivy lucille designs

Fort Collins, Colorado, 80525

Ivy@ivylucilledesigns.com

Ramblin' Vines

Finished Measurements

4.5" 20"

Yarn

Brown Sheep Company Lanaloft Sport (100% Wool, 145 yds/50g): Salmon.

Needles

US 5 (3.75mm) straight or circular needles, or size to obtain gauge

Notions

Tapestry Needle

Sewing Needle and Thread

Gauge

23 sts = 4" stockinette stitch.

Let's GO:

Button Tab:

Cast on 7

Row 1: K7.

Row 2: K3, p1, k3.

Row 3: K3, [yo, k1] twice, k2.

Row 4: K3, p3, k3.

Row 5: [K3, yo] twice, k3.

Row 6: K3, yo, p2tog, p2, yo, k2tog, k2.

Row 7: K3, yo, k2tog, [M1, k1] twice, yo, k2tog, k2.



Row 8: K3, yo, p2tog, p4, yo, k2tog, k2.

Row 9: K3, yo, k2tog, [k1, yo] twice, k2, yo, k2tog, k2.

Row 10: K3, yo, p2tog, p6, yo, k2tog, k2.

Row 11: K3, yo, k2tog, k2, M1, k1, M1, k3, yo, k2tog, k2.

Row 12: K3, yo, p2tog, p8, yo, k2tog, k2.

Row 13: K3, yo, k2tog, k2, [k1, yo] twice, k4, yo, k2tog, k2.

Row 14: K3, yo, p2tog, p10, yo, k2tog, k2.

Row 15: K3, yo, k2tog, k4, M1, k1, M1, k5, yo, k2tog, k2.

Row 16: K3, yo, p2tog, p12, yo, k2tog, k2.

Row 17: K3, yo, k2tog, k5, [yo, k1] twice, k5, yo, k2tog, k2.

Row 18: K3, yo, p2tog, p14, yo, k2tog, k2.

Row 19: K3, yo, k2tog, k6, M1, k1, M1, k7, yo, k2tog, k2.

Row 20: K3, yo, p2tog, p16, yo, k2tog, k2.

Row 21: K3, yo, k2tog, k7, yo, k1, yo, k8, yo, k2tog, k2.

Row 22: K3, yo, p2tog, p18, yo, k2tog, k2.

Row 23: K3, yo, k2tog, k8, M1, K1, M1, k9, yo, k2tog, k2.

Row 24: K3, yo, p2tog, p20, yo, k2tog, k2.

Ramblin' Vine Chart

Work Chart 2-12 once, repeat 1-12 of chart 8 times, ending on row 12.

Button Tab:

Row 1: K3, yo, p2tog, p20, yo, k2tog, k2

Row 2: K3, yo, k2tog, k7, ssk, k1, k2tog, k8 yo, k2tog, k2.

Row 3: K3, yo, p2tog, p18, yo, k2tog, k2.

Row 4: K3, yo, k2tog, k6, ssk, k1, k2tog, k7, yo, k2tog, k2.

Row 5: K3, yo, p2tog, p16, yo, k2tog, k2.

Row 6: K3, yo, k2tog, k5, ssk, k1, k2tog, k6, yo, k2tog, k2.

Row 7: K3, yo, p2tog, p14, yo, k2tog, k2.

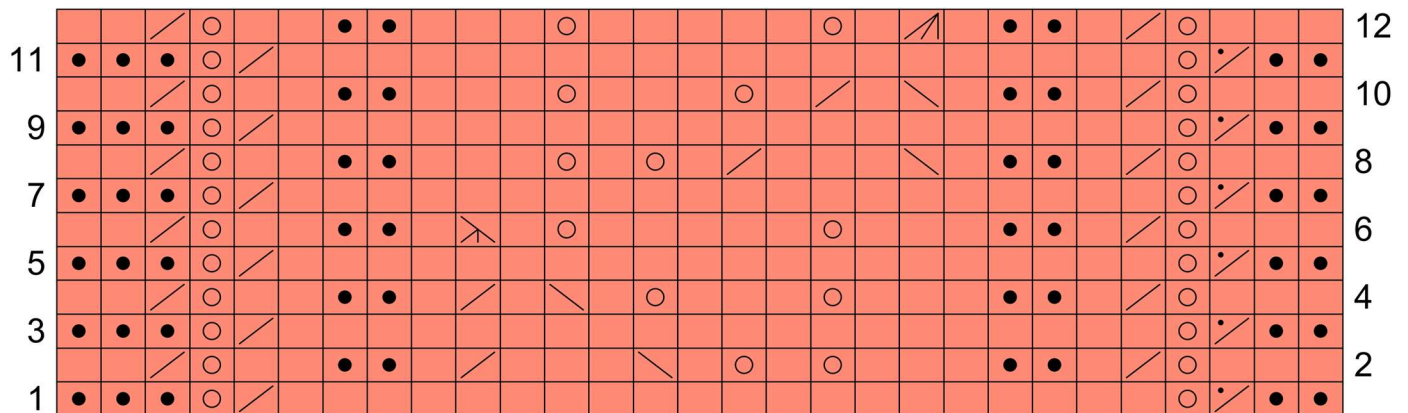
Row 8: K3, yo, k2tog, k4, ssk, k1, k2tog, k5, yo, k2tog, k2.

- Row 9:** K3, yo, p2tog, p12, yo, k2tog, k2.
- Row 10:** K3, yo, k2tog, k3, ssk, k1, k2tog, k4, yo, k2tog, k2.
- Row 11:** K3, yo, p2tog, p10, yo, k2tog, k2.
- Row 12:** K3, yo, k2tog, k2, ssk, k1, k2tog, k3, yo, k2tog, k2.
- Row 13:** K3, yo, p2tog, p8, yo, k2tog, k2.
- Row 14:** K3, yo, k2tog, k1, ssk, k1, k2tog, k2, yo, k2tog, k2.
- Row 15:** K3, yo, p2tog, p6, yo, k2tog, k2.
- Row 16:** K3, yo, k2tog, k1, s2tog-k1-p2sso, k2, yo, k2tog, k2.
- Row 17:** K3, yo, p2tog, p4, yo, k2tog, k2.
- Row 18:** K3, yo, k2tog, s2tog-k1-p2sso, k1, yo, k2tog, k2.
- Row 19:** Bo 11 sts.

Finishing

Block, sew on buttons, weave in ends, Brag!

Ramblin' Vines Chart



Stitches

- RS: k; WS: p
- RS: p; WS: k
- yo
- RS: k2tog; WS: p2tog
- ssk
- WS: k2tog
- k3tog
- s1-k2tog-p2sso