



ivy lucille designs

Fort Collins, Colorado, 80525

Ivy@ivylucilledesigns.com

Trekkin' Trails

Finished Measurements

4.5x20"

Yarn

Brown Sheep Company Lanaloft Sport (100% Wool; 145 yrd/50g):
Buckwheat

Needles

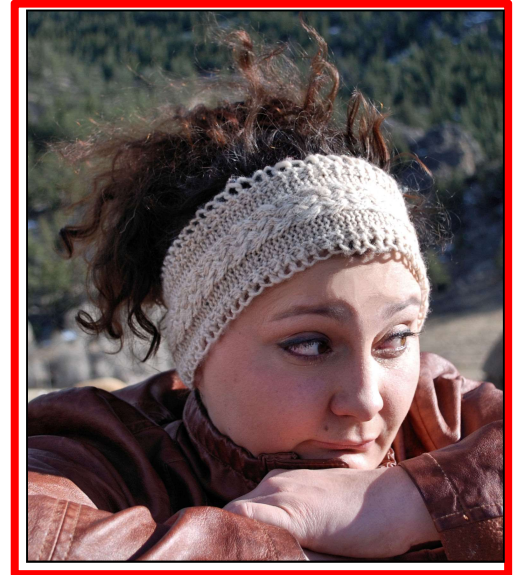
US 5 (3.75mm) straight or circular needles, or size to obtain gauge

Notions

Tapestry Needle
Sewing Needle and Thread

Gauge

23 sts = 4" in stockinette stitch



Let's GO

Button hole Tab:

Row 1: Co 9 sts.

Row 2: Yo, k9.

Row 3: Yo, k2tog, k2, p2, k4.

Row 4: Yo, k2tog, k8.

Row 5: Yo, k2tog, k2, p2, k4.

Row 6: Yo, k2tog, [k2, yo] twice, k4.

Row 7: Yo, k2tog, k2, p4, k4.

Row 8: Yo, k2tog, k1, [k2, M1] twice, k5.

Row 9: Yo, k2tog, k2, p6, k4.

Row 10: Yo, k2tog, k2, [k2, yo] twice, k6.

Row 11: Yo, k2tog, k2, p8, k4.

Row 12: Yo, k2tog, k3, [k2, M1] twice, k7.

Row 13: Yo, k2tog, k2, p10, k4.

Row 14: Yo, k2tog, k6, yo, k2, yo, k8.

Row 15: Yo, k2tog, k2, p12, k4.

Row 16: Yo, k2tog, k5, [k2, M1] twice, k9.

Row 17: Yo, k2tog, k2, p14, k4.

Row 18: Yo, k2tog, k8, [yo, k2] twice, k8.

Row 19: Yo, k2tog, k2, p16, k4.

Trekkin' Trail

Work chart 31 times.

Button Tab:

Row 1: Yo, k2tog, k7, ssk, k2, k2tog, k9.

Row 2: Yo, k2tog, k2, p14, k4.

Row 3: Yo, k2tog, k6, ssk, k2, k2tog, k8.

Row 4: Yo, k2tog, k2, p12, k4.

Row 5: Yo, k2tog, k5, ssk, k2, k2tog, k7.

Row 6: Yo, k2tog, k2, p10, k4.

Row 7: Yo, k2tog, k4, ssk, k2, k2tog, k6.

Row 8: Yo, k2tog, k2, p8, k4.

Row 9: Yo, k2tog, k3, ssk, k2, k2tog, k5.

Row 10: Yo, k2tog, k2, p6, k4.

Row 11: Yo, k2tog, k2, ssk, k2, k2tog, k4.

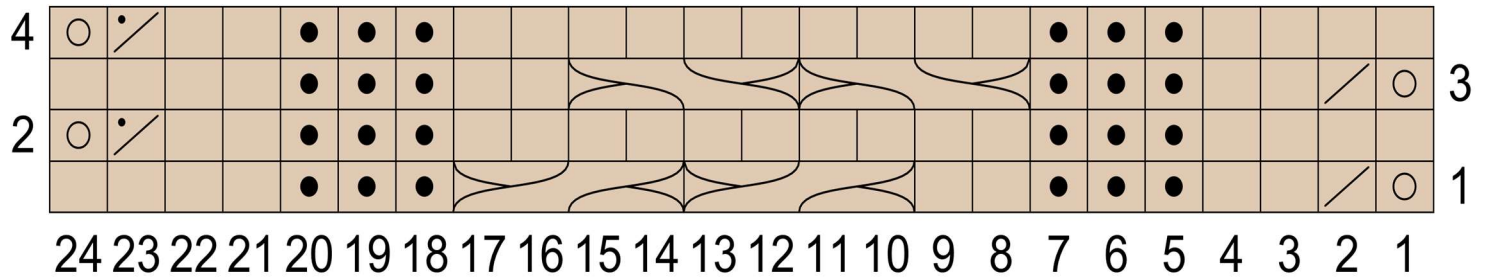
Row 12: Yo, k2tog, k2, p4, k4.

Row 13: Yo, k2tog, k2, ssk, k2tog, k4.








Row 14: Bo 10 sts.

Block, sew on buttons, weave in ends, Brag!

Trekkin' Trail Chart



Stitches

-  RS: k; WS: p
-  RS: p; WS: k
-  yo
-  k2tog
-  WS: k2tog
-  2/2 RC
-  2/2 LC